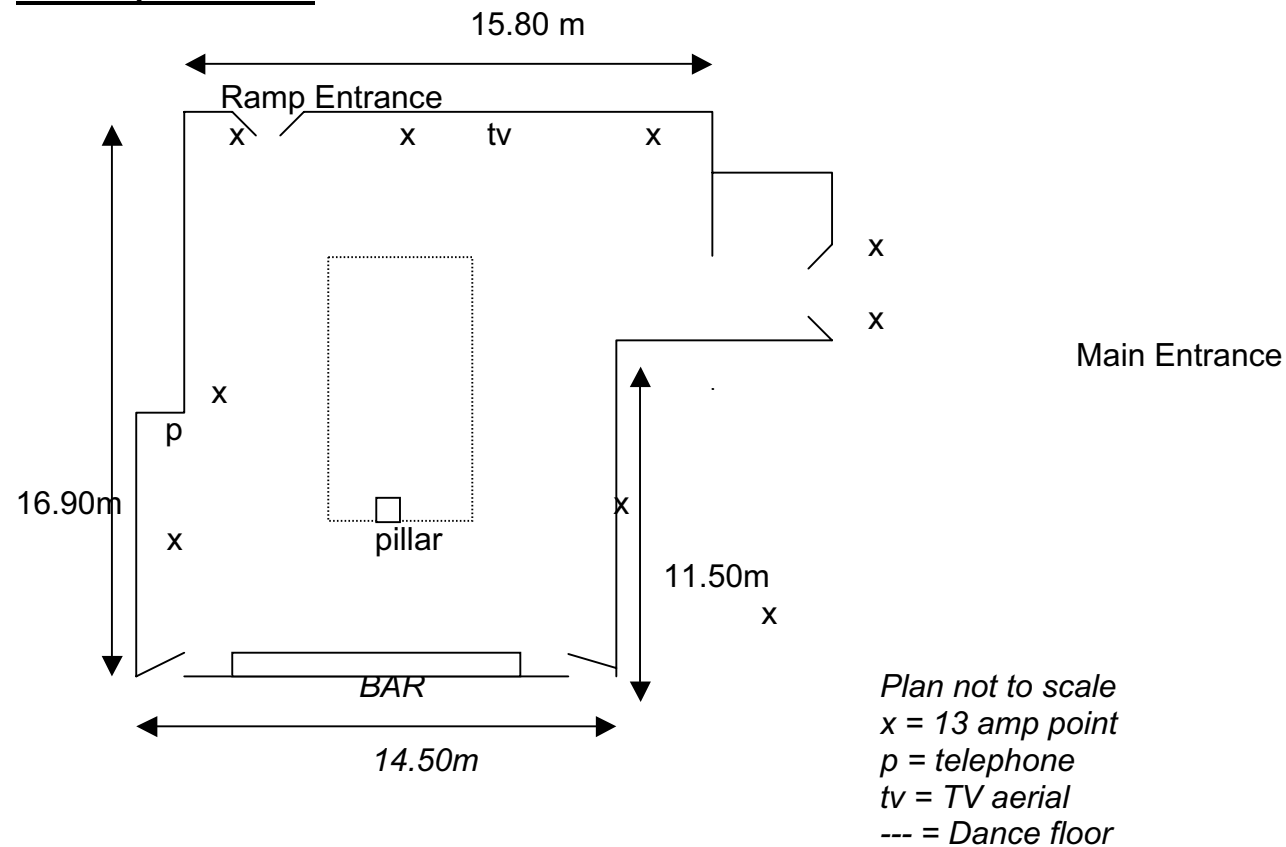


### The Belvedere Suite

Our largest room ideal for many types of events such as private dinners, wedding receptions, trade shows, meetings and conferences. Located on the ground floor with views across the neighbouring countryside and hotel grounds, this suite enjoys the benefits of natural light, its own en-suite facilities, private bar, a dance floor and disabled access. The room can also be divided by curtains to accommodate smaller groups where required. The adjoining courtyard provides additional outdoor space.

#### Room Specification



Dance Floor: 5.2m x 9.1m  
Ramp Access door 2.4m wide x 2.12m high  
Room area: 251 square metres  
Ceiling Height: Maximum – 3.5 metres Minimum – 2.83 metres

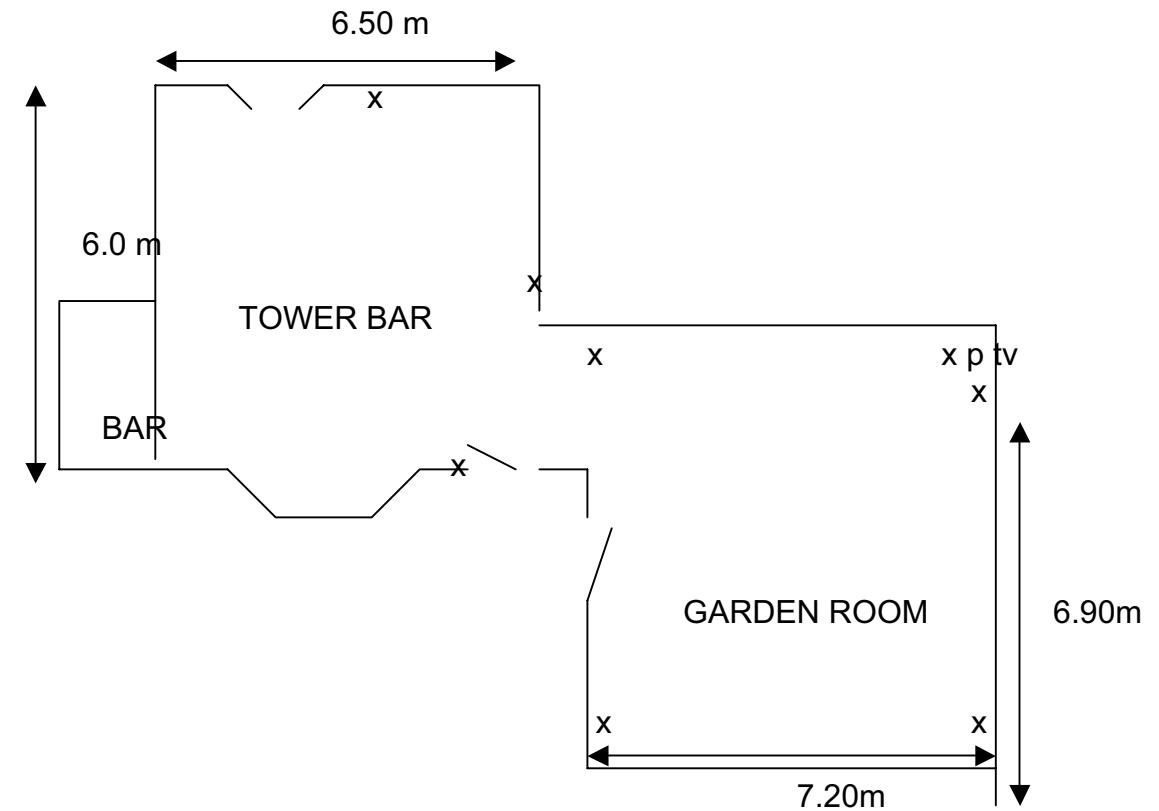
#### Room Capacity

Theatre Style: 250 (Allows room for back projection)  
Classroom Style: 60  
Boardroom style: 40  
Cabaret Style: 80  
U-shape: 30  
Banqueting: 160  
Finger Buffet: 180  
Seated Buffet: 140  
Ceremonial Seating: 140

### The Garden Room (and Tower Bar)

Enjoying fabulous views across the neighbouring countryside this room is ideal for smaller types of events such as private dinners, wedding receptions, trade shows, meetings and conferences for up to 70 people. Located on the ground floor with direct access to the tower bar, both rooms open onto a terraced area and the hotel grounds.

#### Room Specification



Room area: 92 square metres  
Ceiling height: 3.4 metres

#### Room Capacity

Theatre Style: 50  
Classroom Style: 20  
Boardroom Style: 28  
Cabaret Style: 18  
U-shape: 20  
Banqueting: 24  
Finger Buffet: 70  
Ceremonial Seating: 50

We are an established conference and meeting venue, having hosted everything from large car shows and exhibitions to small meetings. Our experienced management team are on hand to assist you from organisation through delivery. We have 5 meeting rooms of various sizes, accommodating up to 250 people. All rooms boast natural daylight and benefit from the wonderful peace and quiet provided by our beautiful location.

Our Courtyard restaurant, adjoined by the Tower Bar, provides pleasant surroundings for delegate lunches and is also ideal for small corporate dinners.

The Hotel benefits from a large complimentary car park and our comfortable bedrooms provide peaceful overnight accommodation.

We believe 'simple is best' and as such have combined our products and services into simple packages, from our 'cover the essentials' value option through to our 'complete deal' which includes a three course dinner and overnight accommodation in addition to much more.



### **Package 1 – 'Cover the essentials' – Inclusive Day Delegate Package**

**£28.95 per person** (VAT included, based on a minimum of 8 delegates)

- Room hire
- Room configuration per your requirements
- Two servings of tea, coffee and biscuits
- Hot & Cold Buffet Lunch
- 1 Flipchart
- Pens, pencils and paper
- Table refreshments

### **Package 2 – 'Middle Deal' – Inclusive Day Delegate Package**

**£34.95 per person** (VAT included, based on a minimum of 8 delegates)

- Room hire
- Room configuration per your requirements
- Tea, coffee and Danish pastries (or bacon sandwiches) on arrival
- Mid-morning tea, coffee with biscuits
- Hot & Cold Buffet Lunch served with a selection of fruit juices
- Afternoon tea, coffee with biscuits
- Unlimited flipcharts, screen, LCD projector, TV, video/dvd player
- Pens, pencils and paper
- Table refreshments including mineral water and fresh fruit

### **Package 3 – 'Complete Deal' – 24 Hour All Inclusive Delegate Package**

**£129.95** (VAT included, based on a minimum of 8 delegates)

- All as 'Middle Deal', above
- plus
- Single Occupancy accommodation
- Free High Speed Internet access
- 3 course table d'hote dinner with coffee in the Courtyard restaurant
- Full English breakfast

### **Not quite what you are looking for?**

Where these packages may not meet your requirements we welcome the opportunity to discuss alternative arrangements.

### **Room Hire Only (VAT included)**

Belvedere Suite	<b>£385.00</b>
Garden Room	<b>£185.00</b>
Lawrence Room	<b>£90.00</b>
Palk 1	<b>£90.00</b>
Palk 2	<b>£90.00</b>

### **Palk Room 1**

*This room is a pleasant light room on the first floor of the hotel, accessible via stairs from the courtyard. It contains a large fixed boardroom table and is ideal for smaller meetings. As it is close to the Belvedere Suite it is also useful as a syndicate area.*

Room area: 6.0m x 4.5m

Ceiling height: 2.2 metres

#### **Room Capacity**

Boardroom Style: 18

### **Palk Room 2**

*This room is adjacent to Palk Room 1 and is ideally suited to smaller meetings and syndicate groups. The room is accessible via stairs from the courtyard and benefits from natural daylight. Although slightly smaller than Palk 1 it is more flexible and can be laid out in different styles to suit different needs.*

Room area: 5.2m x 4.5m

Ceiling height: 2.2 metres

#### **Room Capacity**

Theatre Style: 15

Boardroom Style: 10

### **The Lawrence Room**

*For executive boardroom meetings of up to 10 people, this peaceful room on the first floor of the hotel enjoys views over the hotel gardens and Devon countryside. The room is on the second floor and is accessed via stairs from the hotel reception area.*

Room area: 6.0m x 4.4m

Ceiling height: 3.1 metres

#### **Room Capacity**

Theatre Style: 20

Boardroom Style: 10-12

U-shape: 8-10